



Electronica Rossoni

LOW PROFILE COMMON MODE SERIES

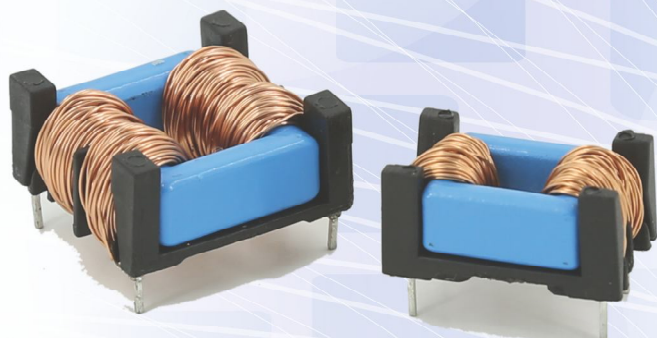
COMMUNICATION
& ENTERTAINMENT
ELECTRONICS

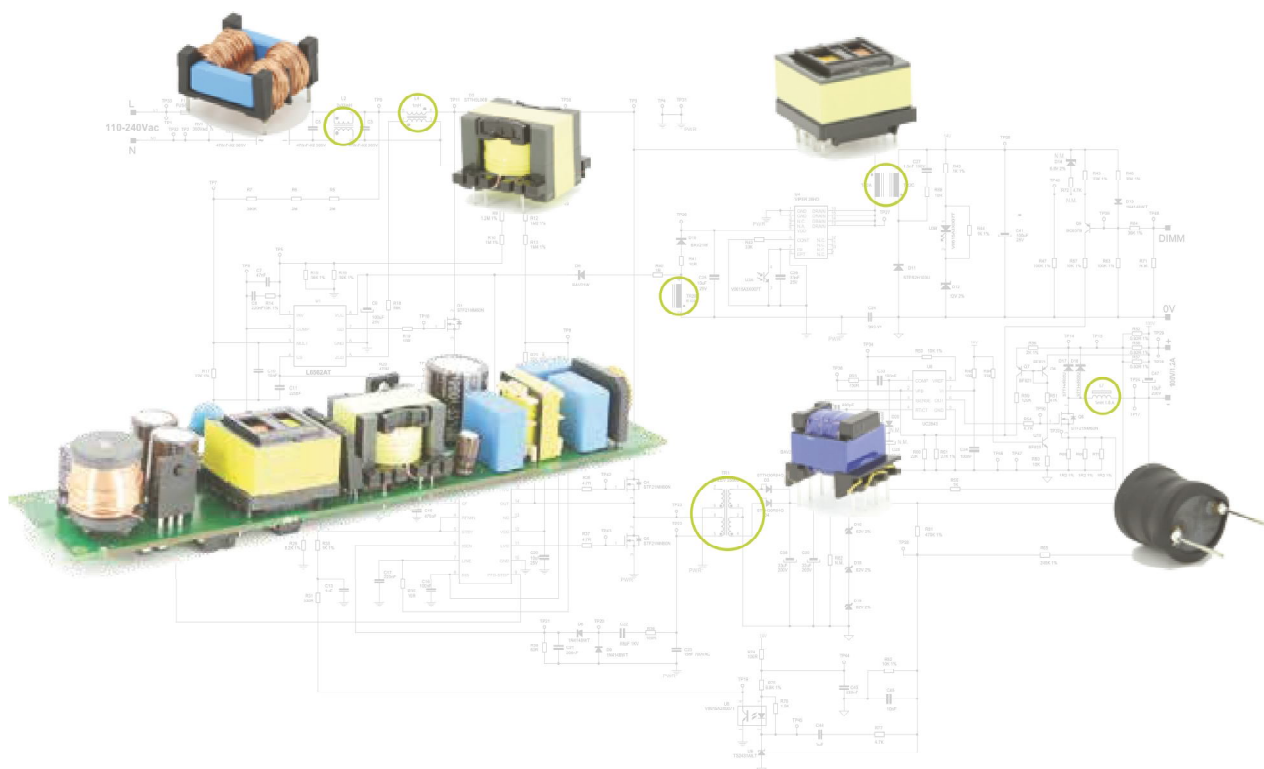
INDUSTRIAL
ELECTRONICS

CONSUMER
ELECTRONICS

AUTOMATION
TECHNOLOGY

LIGHTING
TECHNOLOGY





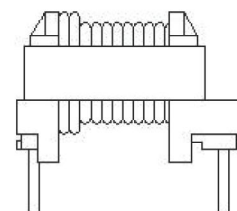
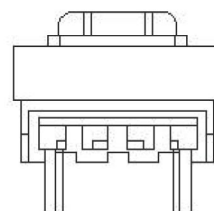
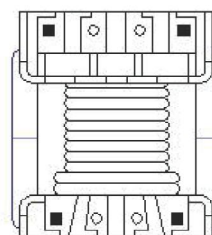
Company Background

Elettronica Rossoni, established in 1988, has got excellent results in the field of wound components mainly utilized inside Lighting, Automotive, CCTV, Monitors, Power Supply, Battery Charger, Audio and Video Door Entry Systems and Household Appliances.

Activities growth together with propulsive push of new ideas and market requirements, have led to an increase of process automation by acquisition of sophisticated production lines, thus permitting to successfully enter the automotive components market with its needs of high reliability joined to very strict fault margins, typical of a sector characterized by very high production volumes and extremely low error tolerances.

In order to assure such a high reliability and quality standards the Company has introduced a Quality Assurance System which has been certified by CSICERT Homologation Institute according to Standard UNI EN ISO 9001:2000, and is continuously monitoring and improving it.

Elettronica Rossoni Group with its facilities occupy an area of around 5000 sqm over a total property of 10000 sqm employing a manpower of 255.



Quality Control

Elettronica Rossoni S.r.l. 's Management, by its President's explicit will, underwrites and discloses the present document synthesizing the Company's directives in order to get an appreciated and renown position inside its operating market.

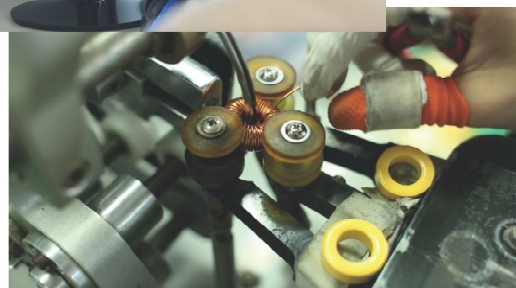
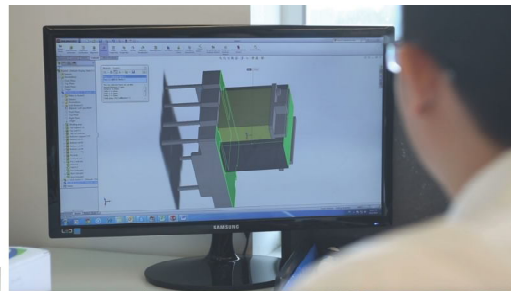
Elettronica Rossoni S.r.l. has reached a new organization structure expressed in its defined functions diagram. The development of the Management System for the Quality (QMS) according to international Standards UNI EN ISO 9001:2008, represents the resolution of going along a Customer's oriented path, not forgetting other relevant parts such as its employees, suppliers and all the general community.



The Management, while respecting contracts requirements both mandatory and imposed by its QMS, aims to have all its staff involved toward the achievement of targets, yearly renewable, focused to the improvement of Company's performances and is therefore firstly committed to:

Verify periodically the results of planned Quality-Indicators referred to company processes;
Assuring the availability, compatibly with Company's powers, of all resources suitable to pursue and reach definite targets;

Keep updated our personnel and their operative processes according to reference laws and regulations;
Expand our productive capacity in China to enhance our market competitiveness;
Periodically revising the present document to verify its suitability and conformity to Company's strategic targets.

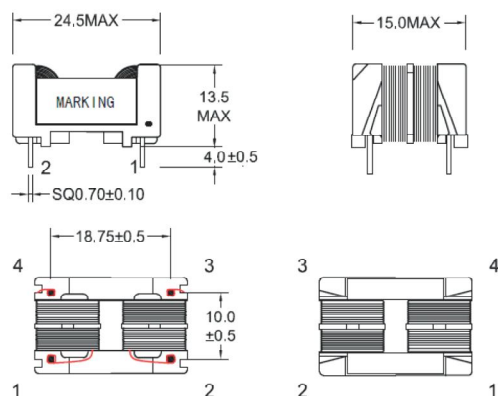


Voltage 85-264Vac Current 0.45 to 1.6A

www.elettronicarossoni.com

Max Dimensions in mm

Pins are tinned

Pins distance tolerances $\pm 0.2\text{mm}$ 

Types

Code	Rated current per winding A	Rated inductance per winding mH	DC resistance per winding (typical) m Ω
ERLB401	0.45	100	2930
ERLB402	0.6	68	1970
ERLB403	0.7	47	1260
ERLB404	0.8	39	1100
ERLB405	0.9	27	770
ERLB406	1.3	15	430
ERLB407	1.6	10	290

Technical Data

Rated current:

Operating voltage:

Rated inductance:

Testing voltage:

Operating temperature range:

DC resistance:

Approx. weight:

 $\Delta T \leq 40^\circ\text{C}$ ambient temperature

250Vac - 50Hz

at $+20^\circ\text{C}$ and 10kHz, 0.1V

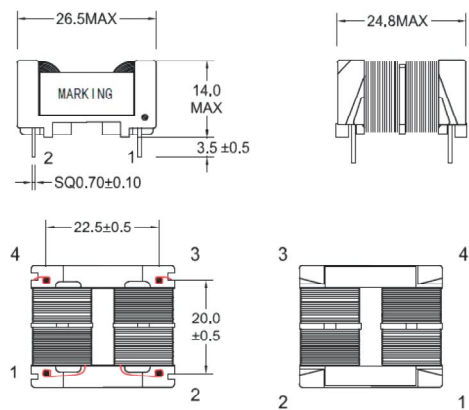
1500V - 50Hz, 2 sec, winding to winding

 -40 to $+125^\circ\text{C}$, including self temperature raiseat $+20^\circ\text{C}$

9g

The chokes are designed and tested in accordance with EN 138100 ; EN 60938-1. The cases are of flame-retardant plastic material in accordance with UL 94V-0.

Max Dimensions in mm
Pins are tinned
Pins distance tolerances ± 0.2 mm



Types

Code	Rated current per winding A	Rated inductance per winding mH	DC resistance per winding (typical) mΩ
ERLB501	0.7	100	1810
ERLB502	0.9	68	1100
ERLB503	1.1	47	804
ERLB504	1.2	39	696
ERLB505	1.4	27	440
ERLB506	1.9	15	279
ERLB507	2.3	10	188

Technical Data

Rated current:	$\Delta T \leq 40^{\circ}\text{C}$ ambient temperature
Operating voltage:	at $+20^{\circ}\text{C}$ and 10kHz, 50mV
Rated inductance:	$+50 - 30\%$
Testing voltage:	1500V - 50Hz, 2 sec, winding to winding
Operating temperature range:	-40 to $+125^{\circ}\text{C}$, including self temperature raise
DC resistance:	at $+20^{\circ}\text{C}$
Approx. weight:	9g

The chokes are designed and tested in accordance with EN 138100 ; EN 60938-1. The cases are of flame-retardant plastic material in accordance with UL 94V-0.

Providing SOLUTION is our APTITUDE



AVROSS ELETTRONICA s.r.l

com.BRAZI, Sat NEGOIESTI Z.I.DIB
jud, PRAHOVA Romania

Tel: 0039 0293549707

Fax: 0039 0293549333

Email: info@elettronicarossoni.it

Manpower: 90



ELETTRONICA ROSSONI CHINA LTD

LongShan 5 Road,
XiangShuiHe Industry District
DaYaWan, HuiZhou, Guangdong, China

Tel: 00852 35635480

Email: info@elettronicarossoni.hk

Manpower: 140



DONG GUAN ER ELECTRONICS CO., LTD

No. 194 Xin Feng Xi Road, Si Cun,
Shi Jie Town, Dongguan City, Guangdong,
P.R. China 523305

Email: info@elettronicarossoni.hk



ELETTRONICA ROSSONI

Via Europa, 35/A 20010 Poglian
Milanese (MI) - Italy PI e Cod
10459790159

Tel: 0039 02 93549707

Tel: 0039 02 93549653

Fax: 0039 02 93549333

Email: info@elettronicarossoni.it

Manpower: 25



ELETTRONICA ROSSONI HK LTD

Room 4, 5/F, Eastern Harbour Centre
28 Hoi Chak Street, Quarry Bay
Hong Kong

Tel: 00852 35635480

Email: info@elettronicarossoni.hk

Manpower: 6



Elettronica Rossoni



Elettronica Rossoni

www.elettronicarossoni.com