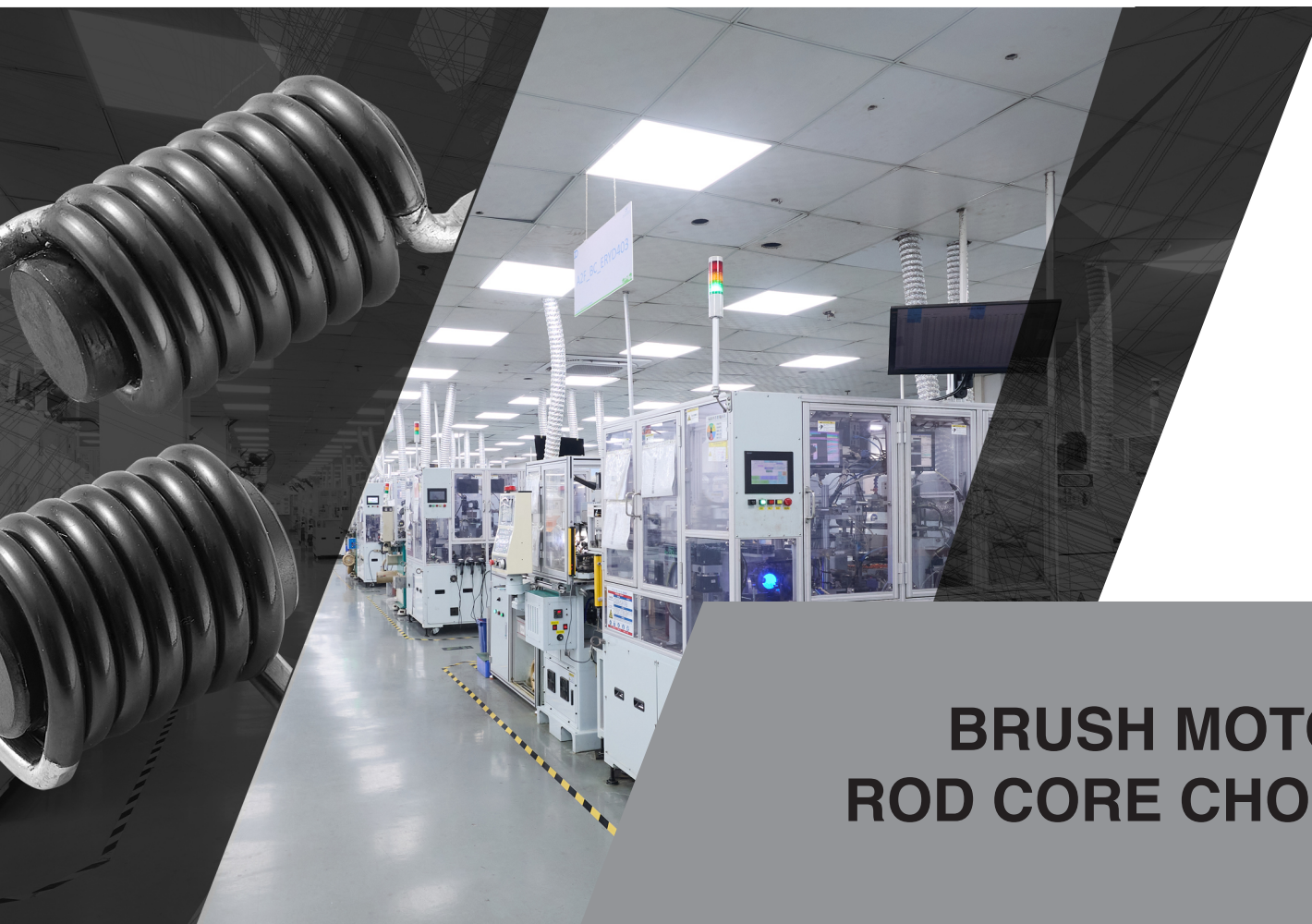


**MAGNETIC SOLUTIONS**

**COMPONENTS**

**AUTOMOTIVE**



**BRUSH MOTORS  
ROD CORE CHOKES**

**ELETTRONICA  
ROSSONI**  
INNOVATIVE SOLUTIONS

Elettronica Rossoni Group, boasting over three decades of experience, presents a professional team dedicated to create solutions to your specific requirements.

Specializing in the manufacturing of appliances, electrical components, and electronics, we are committed to delivering innovative solutions to meet your needs.

## BRUSH MOTORS ROD CORE CHOKES

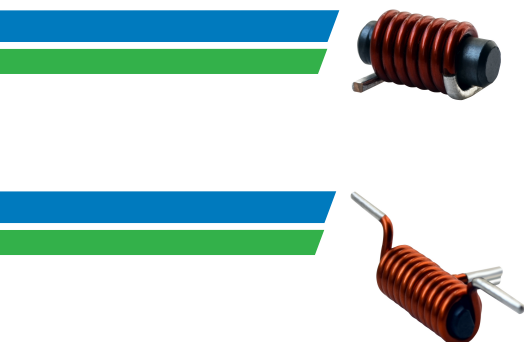
With more of three decades of expertise in the development of HR components, Elettronica Rossoni specializes in the design and manufacture of custom Brush Motors Rod Core Chokes and air coils. Our solutions are engineered to meet the stringent performance and reliability of the demanding environment requirements.

Among our value added solutions, we offer customized soldering surfaces designed to optimize solderability and strengthen the mechanical connection to the PCB. These surfaces can be coated with either tin/lead or RoHS compliant materials, according to customer specifications.

In addition to adhering to our rigorous internal quality standards, Elettronica Rossoni has implemented a comprehensive framework of advanced testing and inspection protocols designed to ensure the long term reliability and consistent performance of our components, even in the most demanding applications. These protocols are integrated into our standard production and quality assurance processes and are based on internationally recognized methodologies and industry best practices.

Elettronica Rossoni continuously works to maintain high certification standards across all aspects of our processes in our different areas of production.





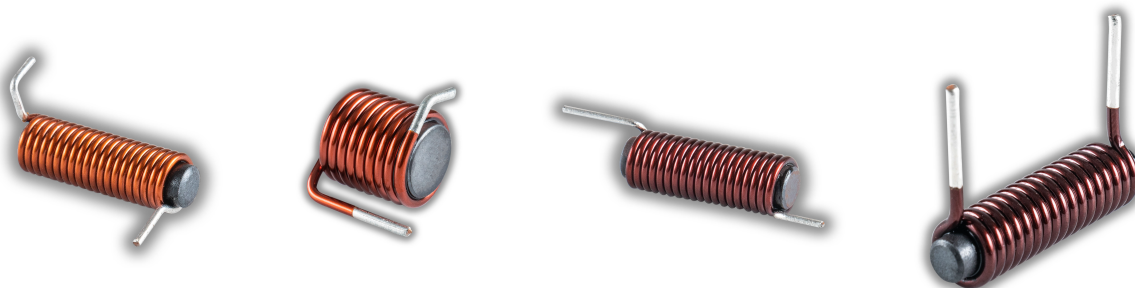
### POSSIBLE TEST REQUIREMENTS

- AEC-Q 200
- Cross-Sectional Microstructure
- High Reliability Testing & Inspection Flow
- MIL STD 883
- MIL STD 981
- MIL STD 202 method 213
- MIL STD 202 method 204
- Rated Current Burn-In
- Outgassing ASTM E 525

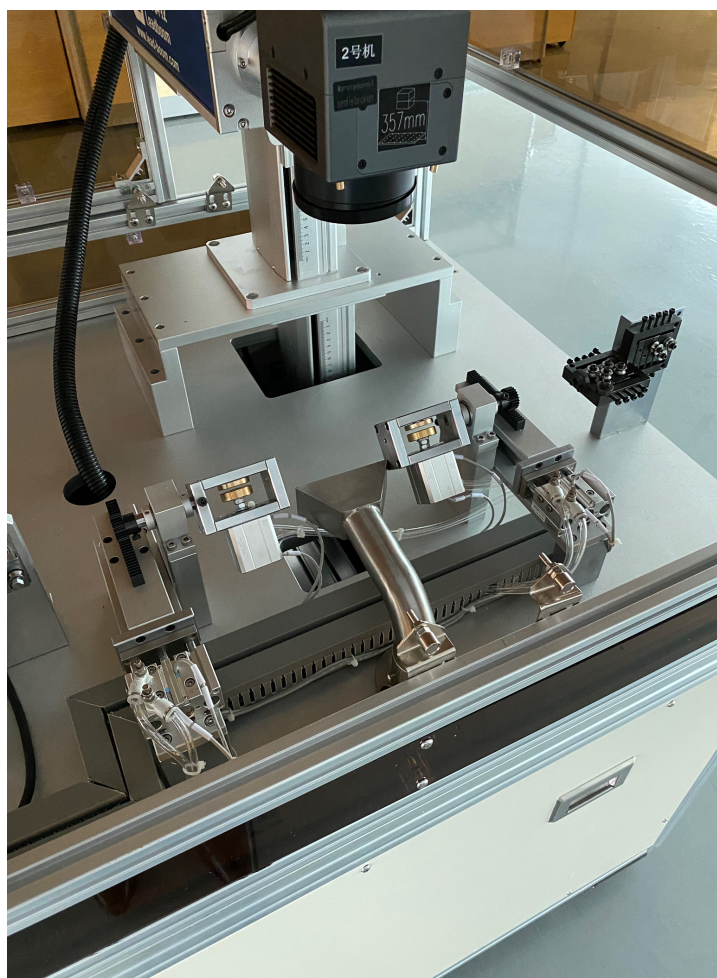


### APPLICATIONS

- Automotive
- Electronic Circuits



## TINNING CONTROL



In house developed Laser Stripping process and tinning control.

We can control any type of tinning layer, according to customer needs, starting from a minimum of 0.1  $\mu\text{m}$ .

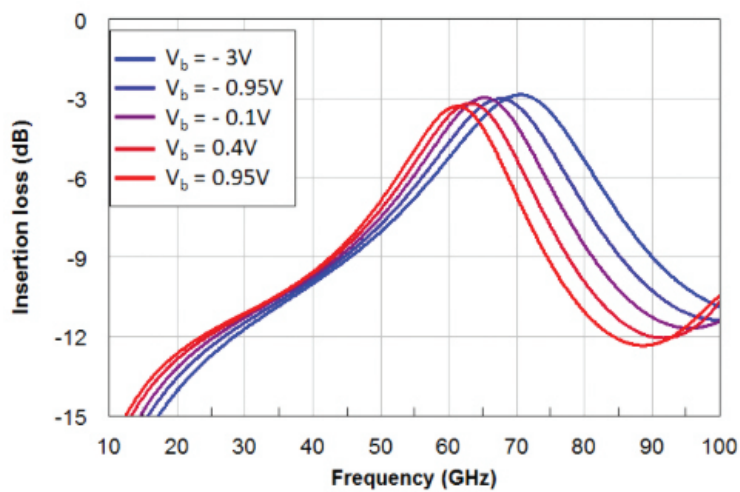
## MECHANICAL PARAMETERS

WIRE DIN EN 60317 - 13	Ø	0.2mm - 4mm
CORE DIAMETER	Ø	1 - 50 mm
FERRITE CORE MATERIAL	µi at 25°C	250, 300 or Custom

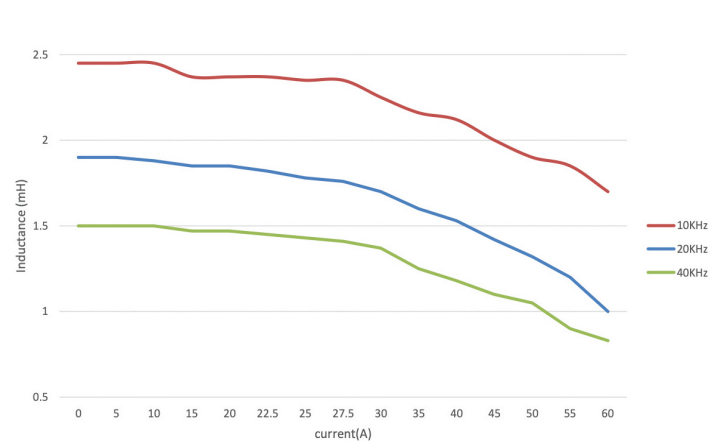
## ELECTRICAL PARAMETERS

INDUCTANCE	L typ.	50nH - 100µH
CURRENT	I <sub>DC</sub> typ	0.5A - 200 A
RESISTANCE	R <sub>DC</sub>	0.5mΩ - 100mΩ
OPERATING TEMPERATURE RANGE	-	-40°C - +180°C

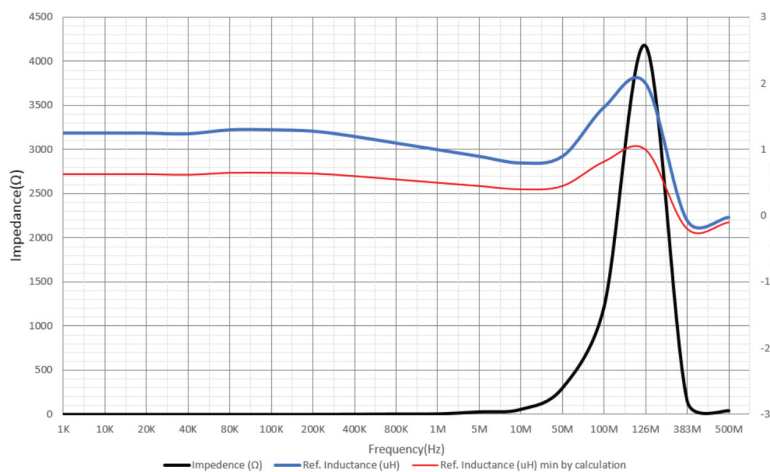
## DIAGRAM EXAMPLE



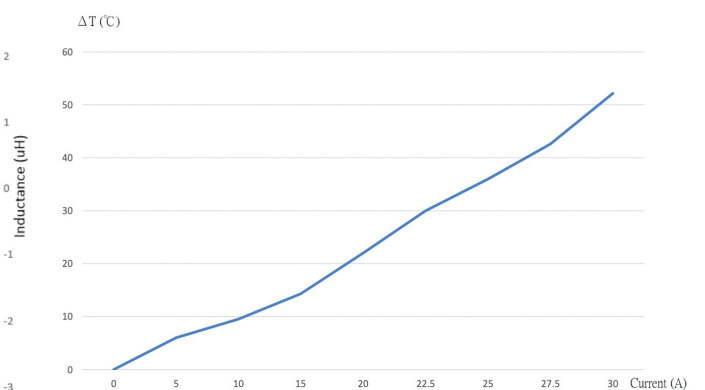
INSERTION LOSS



SATURATION CURVE



IMPEDENCE Vs FREQUENCY



TEMPERATURE VS CURRENT



## QUALITY MANAGEMENT SYSTEM



### QUALITY MANAGEMENT SYSTEM

#### CERTIFIED QM-SYSTEM

- IATF 16949
- DIN EN ISO 9001

#### CERTIFIED EM SYSTEM

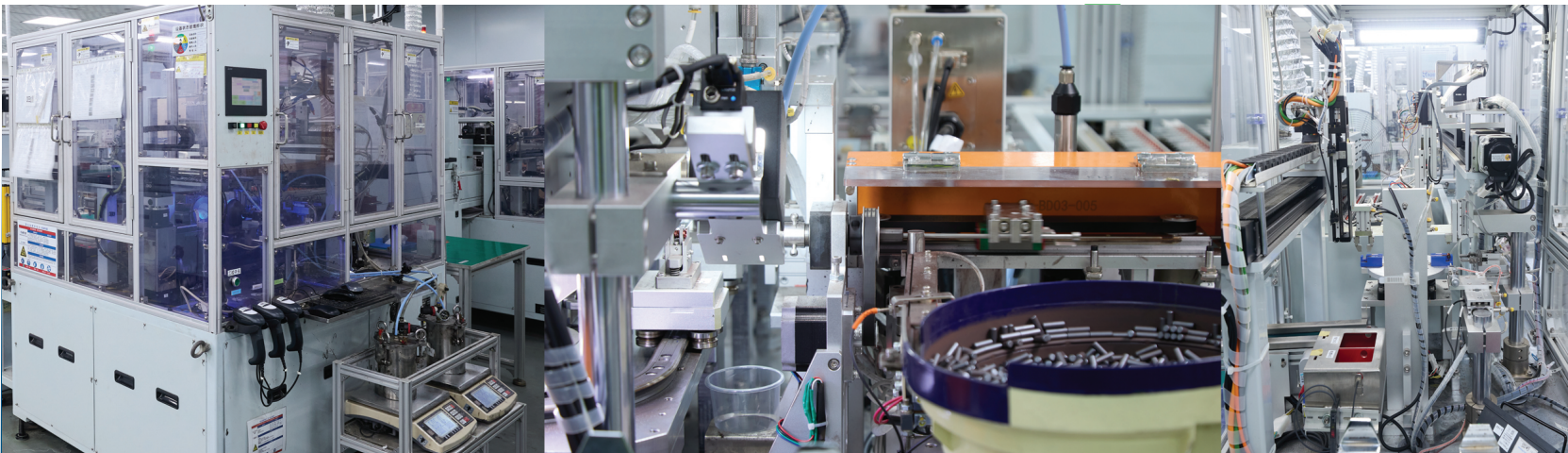
- DIN EN ISO 14001
- DIN EN ISO 50001

#### CERTIFIED SC SYSTEM

- DIN EN ISO 45001

#### ALL PARTS

- AEC-Q200 CERTIFIES
- RoHS Compliant



---

[www.erhk.hk](http://www.erhk.hk)

---

---

✉ [info@erhk.hk](mailto:info@erhk.hk)

---

ITALY | HONG KONG SAR | CHINA | SERBIA