

MAGNETIC SOLUTIONS

COMPONENTS

AUTOMOTIVE



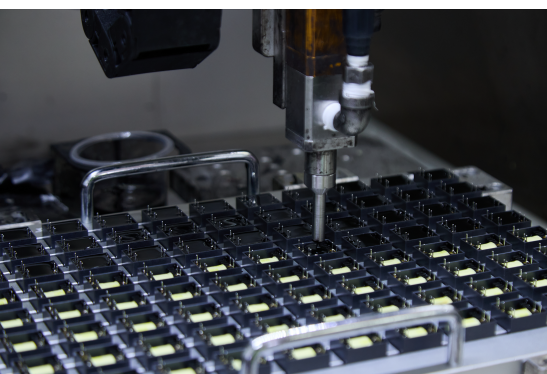
PLUG-IN HYBRID ELECTRIC VEHICLE (HEV) AND ELECTRIC VEHICLE (EV) COMPONENTS

**ELETTRONICA
ROSSONI**
INNOVATIVE SOLUTIONS

Elettronica Rossoni Group, boasting over three decades of experience, presents a professional team dedicated to create solutions to your specific requirements.

Specializing in the manufacturing of appliances, electrical components, and electronics, we are committed to delivering innovative solutions to meet your needs.

EV & PHEV CHARGERS TECHNOLOGIES



CORE COMPETENCES:

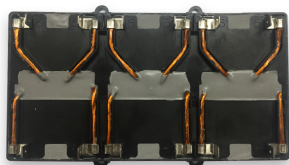
- Product and process development for magnetic materials.
- Design of complex inductive components and modules.
- Development of tools and productions line for high quality components and modules.
- Fast and flexible customer focused project organization.
- Global production network for fast and cost efficiency.
- Mass production with automated processes.



TECHNOLOGIES:

- Plastic injection molding / over molding.
- Connections: soldering, welding, pressfit, crimping.
- Sealing, encapsulation and potting techniques.
- Flat wire management.
- 3D Scanning for each part.
- Laser Stripping.

EV & PHEV CHARGERS PARTS



TRANSFORMERS (Also flat wire)

POWER RANGE: up to 22kW

- Unpotted/potted (module) solution.
- High efficiency thermal characteristics.
- Wide temperature range: -50°C up to +180°C.
- Expert in safety standards (IEC, UL, etc).



PFC (Also flat wire)

POWER RANGE: up to 22kW

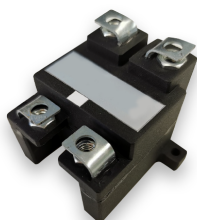
- Optimized thermal cooling link.
- Unpotted/potted (module) solution.
- Wide temperature range: -50°C up to +180°C.
- Expert in safety standards (IEC, UL, etc).



POWER INDUCTORS (Also flat wire)

CURRENT RANGE: up to 300A

- Unpotted/potted (module) solution.
- Minimum DC Resistance.
- Wide temperature range: -50°C up to +180°C.
- High efficiency thermal characteristics.

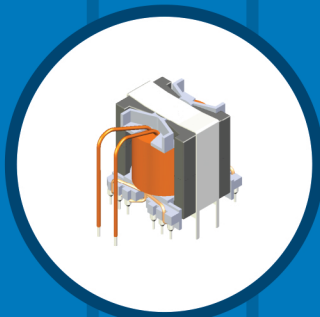
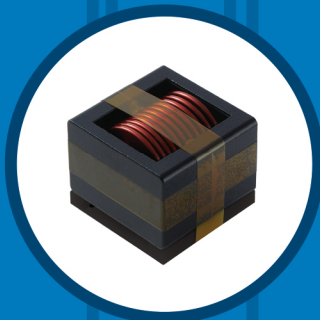
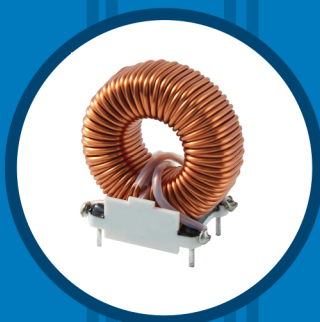


CMC COMMON MODE CHOKES

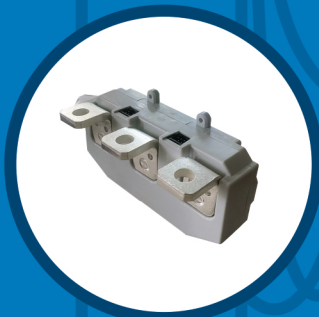
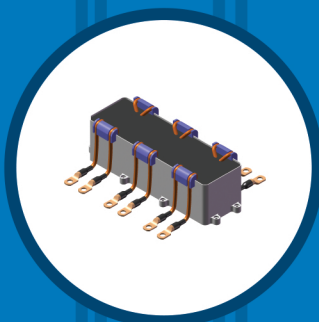
POWER RANGE: up to 22kW

- Optimized thermal coolink link.
- Unpotted/potted (module) solution.
- Wide temperature range: -50°C up to +180°C.
- Expert in safety standards (IEC, UL, etc).

**DC MEDIUM
POWER**



**DC HIGH
POWER**



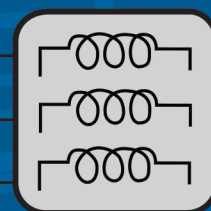
CMC



PFC STAGE

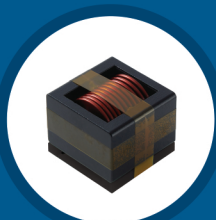


AC PLUG IN

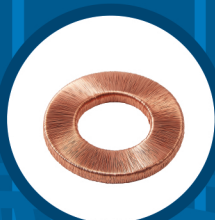


EMI FILTER

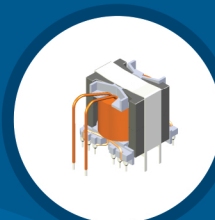
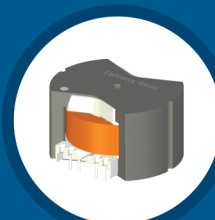
POWER INDUCTOR



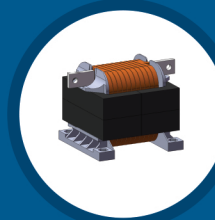
ROGOWSKI COIL



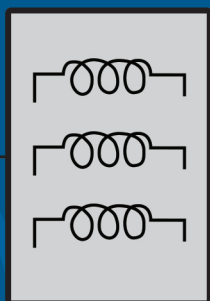
TRANSFORMERS



INDUCTORS



PFC STAGE

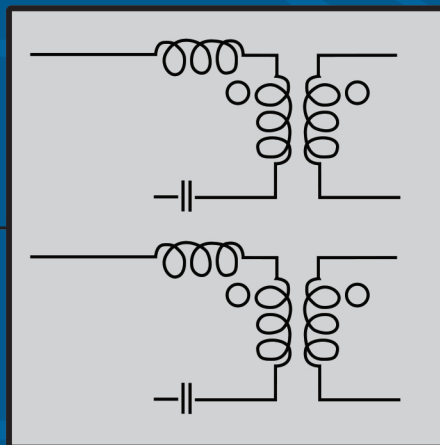


BOOST
INDUCTOR

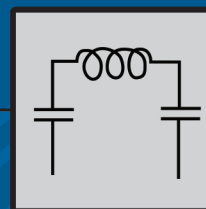


CURRENT
SENSE

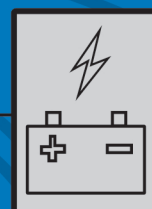
RESONANT CONVERTER



LLC TRANSFORMER



FILTER



HV
BATTERY

CERTIFIED QUALITY SYSTEM



Driving trust in every EV & PHEV component

In the fast evolving world of electric mobility, the quality of every component is critical. A Certified Quality Management System (QMS), is not just a formal requirement; it is a foundation for trust, performance, and long-term reliability.

• Consistency and Reliability

A certified QMS ensures that every process, from design to production, is clearly defined, controlled, and continuously improved.

• Compliance with Industry Standards

Certified systems align with global regulatory and safety standards, ensuring that all EV and PHEV components are suitable for use in international markets and meet the expectations of OEMs.

• Risk Management and Traceability

Full traceability across the supply chain allows for efficient quality control and fast response in case of any issues.

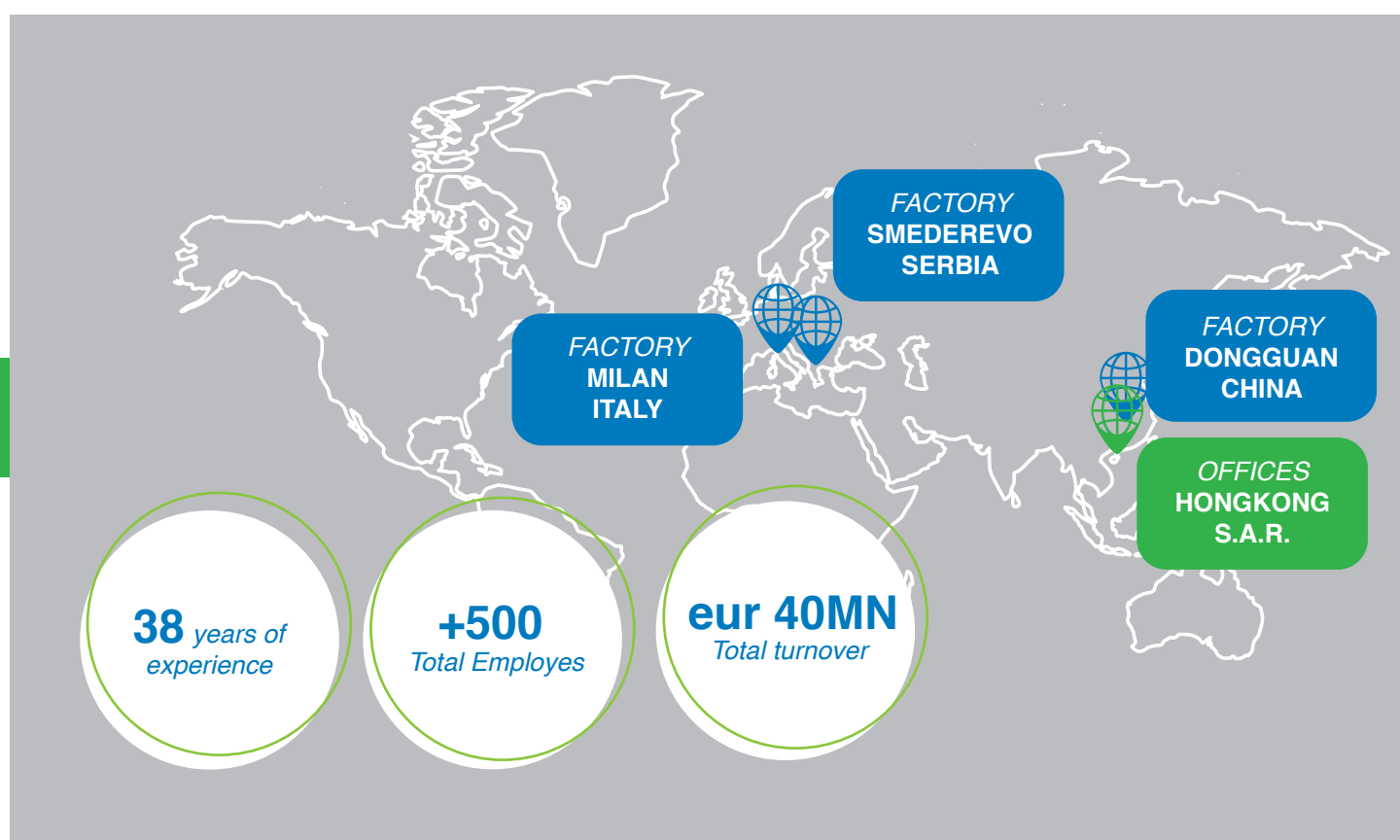
• Customer Confidence

Certification demonstrates a company's commitment to quality, safety, and continuous improvement. It builds trust with automotive partners, end users, and regulatory bodies.

• Product Innovation with Assurance

A structured quality framework supports innovation while maintaining high safety and performance standards vital in the development of next generation charging technologies.

OUR COMPANY IN NUMBERS





www.erhk.hk

✉ info@erhk.hk

ITALY | HONG KONG SAR | CHINA | SERBIA